



GAT MONTHLY MEMBERSHIP PROGRESS REPORT

Results as of: 4/30/2022

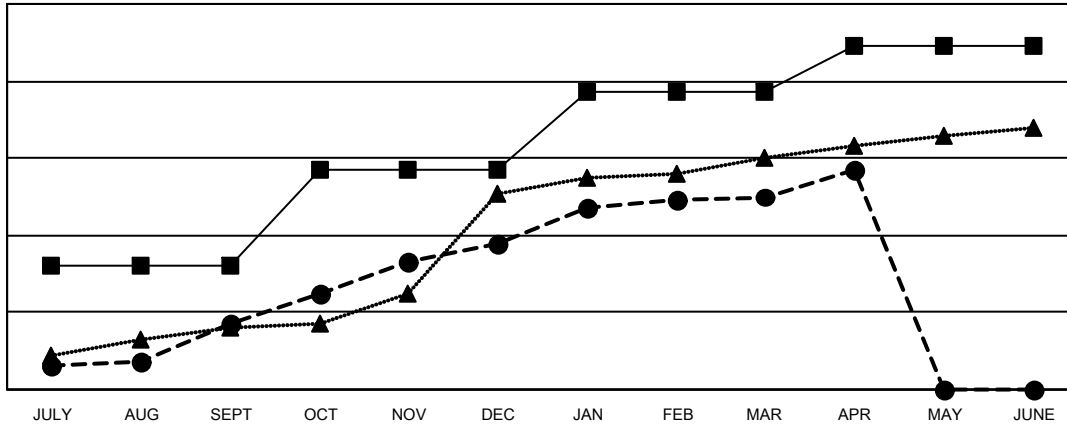
Multiple District 318

LOCATION: INDIA

Clubs			
RESULTS FOR 2021-2022			
QUARTER	NEW CLUB GOAL	NEW CLUBS	DROPPED CLUBS
JULY/AUG/SEPT	32	17	21
OCT/NOV/DEC	25	21	13
JAN/FEB/MAR	20	12	5
APR/MAY/JUNE	12	7	0

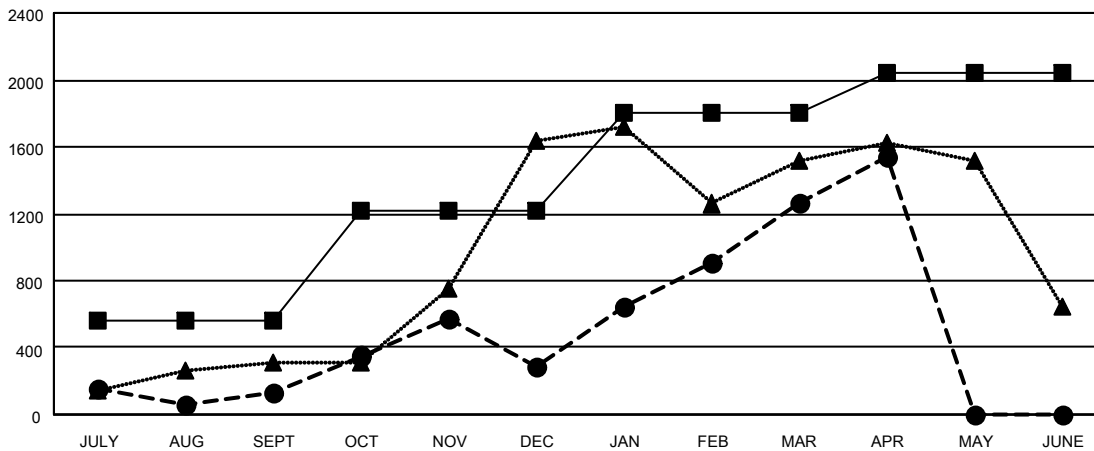
Members			
RESULTS FOR 2021-2022			
QUARTER	MEMBER GROWTH NET GOAL	MEMBER GROWTH ACTUAL	DROPPED MEMBERS ACTUAL (including transfers)
JULY/AUG/SEPT	560	864	697
OCT/NOV/DEC	655	1,184	973
JAN/FEB/MAR	590	1,514	384
APR/MAY/JUNE	240	400	91

GOALS AND ACTUAL NEW CLUBS CUMULATIVE



- - CURRENT YEAR GOALS FOR NEW CLUBS
- - CURRENT YEAR ACTUAL NEW CLUBS
- ▲ - LAST YEAR ACTUAL NEW CLUBS

GOALS AND ACTUAL MEMBERS CUMULATIVE



- - MEMBER GROWTH NET GOAL
- - MEMBER GROWTH ACTUAL
- ▲ - LAST YEAR MEMBERSHIP ACTUAL

DROPPED CLUBS: 39	437 CLUBS OF 767 ADDED 1 OR MORE NEW MEMBERS	GENDER DISTRIBUTION
DROPPED MEMBERS	CLICK HERE FOR CUMULATIVE MEMBERSHIP DATA	MALE 20,265 (80.07%)
DECEASED 93		FEMALE 5,042 (19.92%)
CLUB CANCELLED 692		NON BINARY 1 (0.00%)
OTHER 1,360		PREFER NOT TO ANSWER 0 (0.00%)
TOTAL 2,145		TOTAL FAMILY UNIT MEMBERS 9,008
		FAMILY MEMBERS PAYING HALF DUES 4,796